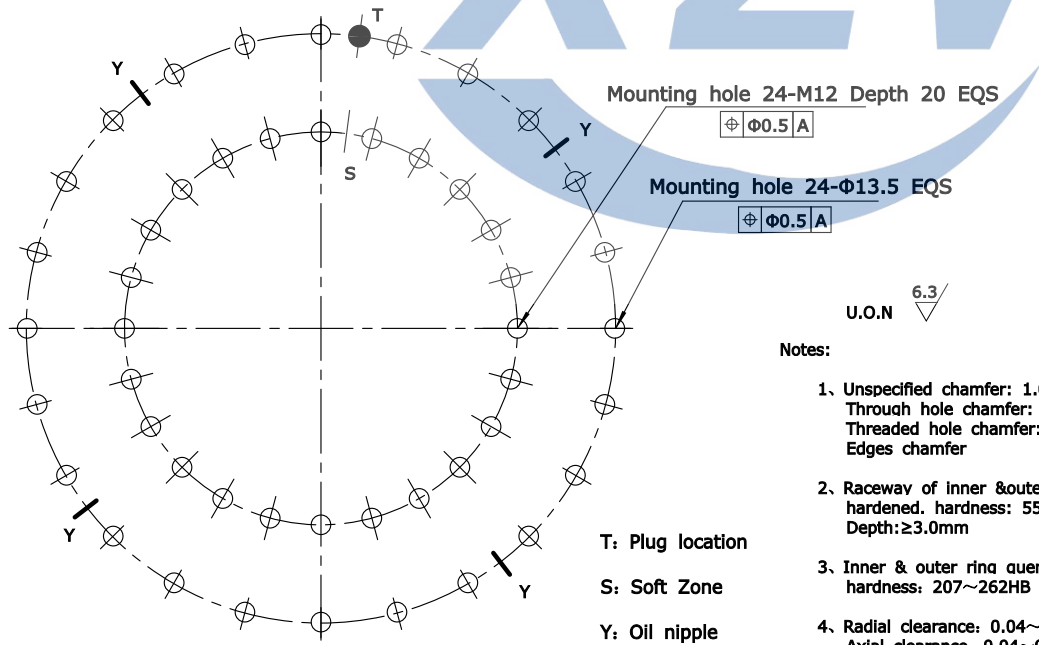
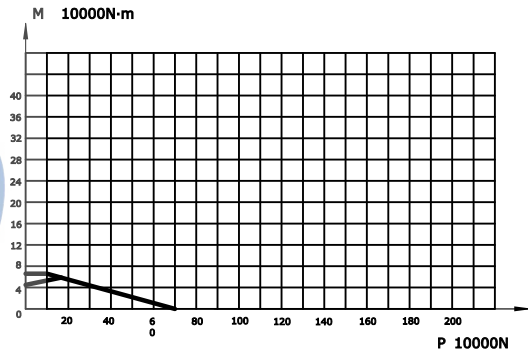
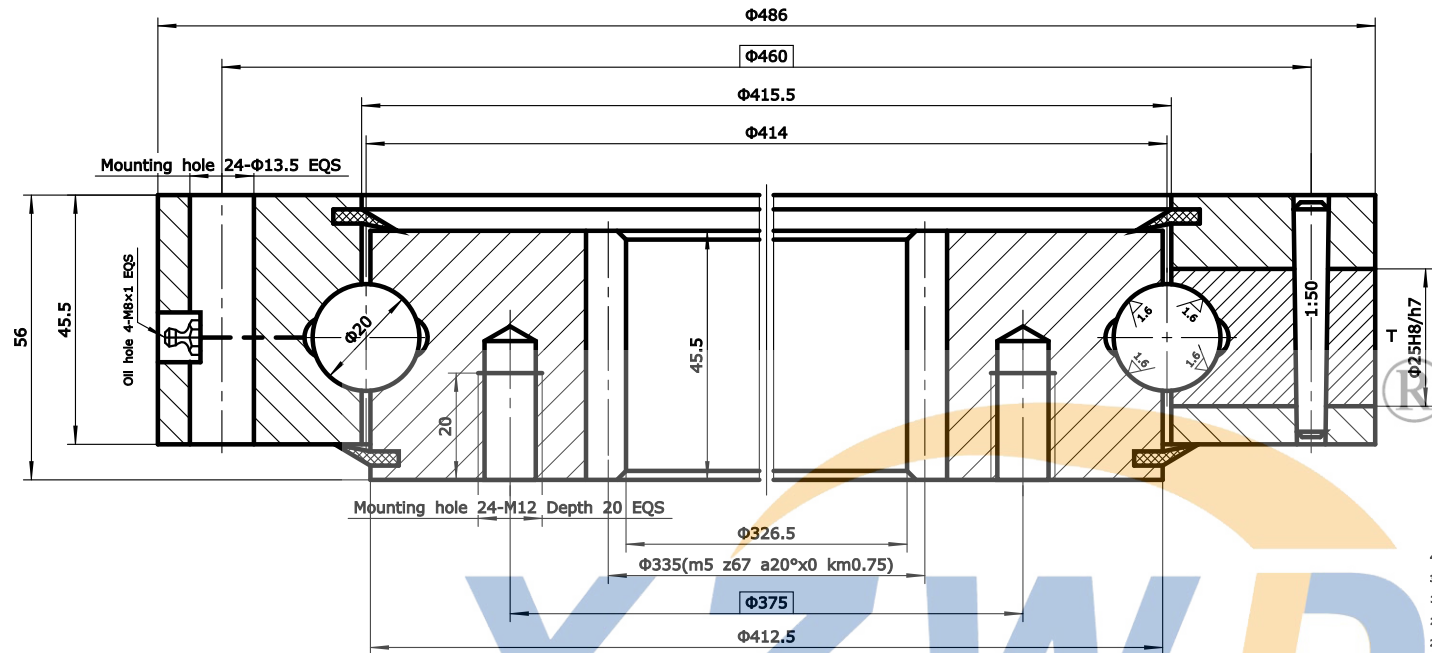


Module	m	5
Teeth no.	z	67
Teeth pressure angle	$\alpha$	20°
Modification coefficients	x	0
Reduction coefficients	km	0.75
Precision(GB10095-88)		10
Average base tangent length and deviation	W	115.40 +0.39 +0.25
Spanned tooth count.	k	8
Base tangent length change tolerances	FW	0.10



- U.O.N  $\nabla$  6.3
- Notes:
1. Unspecified chamfer: 1.0×45°  
Through hole chamfer: 1.0×45°  
Threaded hole chamfer: 2.0×45°  
Edges chamfer
  2. Raceway of inner & outer ring induction hardened. hardness: 55~62HRC  
Depth: ≥3.0mm
  3. Inner & outer ring quenched & tempered, hardness: 207~262HB
  4. Radial clearance: 0.04~0.20 mm  
Axial clearance: 0.04~0.20 mm

T: Plug location  
S: Soft Zone  
Y: Oil nipple

08	HG/T2811	Seals	NBRI-3	W17	2	
07	GB117-76	Pin	CN45	Φ8×40	1	
06		Plug	CN45	Φ25	1	
05	JB/T7940.7	Oil nipple	Component	M8×1	4	
04	GB/T699	Inner ring	50Mn		1	
03	GB/T308-2002	Ball	GCr15	19.844	53±1	
02	HG/T2349	Spacer	Nylon	D20	53±1	
01	GB/T699	Outer ring	50Mn		1	

No.	Standard	Component	Material	Model	Qty	Remark
		Model	WD-062.20.0414	Drawing		Weight 31kg
		Name	Slewing Bearing	Qty		Scale
		Material	50Mn	Total 1 page		the 1st page
Design	Standard	XUZHOU WANDA SLEWING BEARING CO.,LTD Fax: +86 516 83309366 Fax: +86 516 83915766 <a href="http://www.slew-bearing.com">http://www.slew-bearing.com</a>				
Check						
Process	Approve					
Date						